

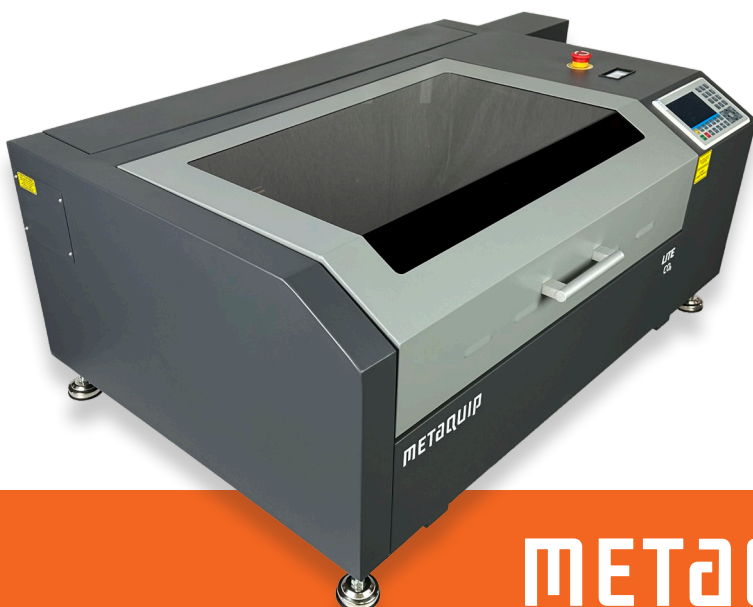


MQ-LITE2 MAKE EVERYTHING YOU WANT!

Ideal for use in schools, home use or starters.
Perfect engraving and cutting results for lighter work.

The MQ4040 Lite 2 is MetaQuip's new CO2 laser cutter, the basic model for engraving and cutting wood, leather, cardboard and a large number of plastics. This table model takes up little space, so it is easy to move without sacrificing quality.

LASER ENGRAVING	Wood, leather, cardboard, glass and plastics
LASER CUTTING	Thin (up to 3-5 mm) wood, leather, textiles and plastics
SOFTWARE	Easy to operate via the graphical controller and Lightburn or Laserworks laser software
WORKING SURFACE	600 x 400 mm (optional 400 x 400mm)
POWER	60W (optional 40W)
FOCUSHEIGHT	Motorized bed - quick and easy focus adjustment
SAFETY	Laser class I - safe in all situations without extra protection
CERTIFICATION	CE certified - conforms to all applicable machinery directives



METAQUIP

EXPERTS IN LASERMACHINES

Make it with the MQ6040 Lite2!

Meet our CO2 LITE2 series, the perfect entry-level CO2 laser machine for all your laser engraving and laser cutting needs! Supplied as standard with 60W of laser power available, the LITE2 series offers the power and flexibility you need to bring your projects to life. This machine is laser class 1 so safe under all circumstances. The LITE is also available with a 40W if the emphasis is mainly on engraving work or with a smaller 400x400mm work bed. Discover today how the MetaQuip LITE2 series can help you realize your laser projects.

CONTENT

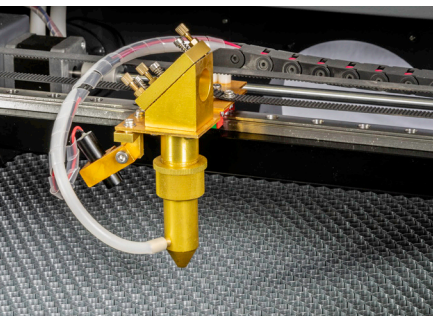
- MQ6040 CO2 laser machine LITE2 60W (or 40W)
- Honeycomb bed for cutting small parts
- Laserworks (win) laser software
- Including industrial water cooler, exhaust fan and air compressor
- Product & software manual (NL, EN, FR or DE)

OPTIONS

- PhotoGrav laser engraving software
- Lightburn (Win, Linux, Mac) laser software
- Industrial air filters
- Laptop with pre-installed software
- Training, installation and maintenance options
- Fully developed teaching material for students

TECHNICAL SPECIFICATIONS

- Work Area: 600x400mm (optional 400x400mm)
- Lasertype: glass CO2 lasertube, 10.6um
- Laser Power: 60W (optional 40W)
- Laser tube Cooling: water cooler with demi water
- Engraving Speed: 0-400 mm/s
- Cutting Speed: 0-160 mm/s
- Workvoltage 100-240Vac, 50-60Hz
- Position Accuracy: +/- 0.03 mm
- Minimum character size: 1 mm
- Focus height: motorised (up to 50mm)
- Machine power output: < 800W
- Ambient temperature 0-40°C, Humidity: 5-95%
- Dimensions [L x W x H]: 95 x 73 x 30 cm (40W)
- Air extraction: fan or (optional) air filter
- Formats: DXF, PDF, AI, PLT, BMP, JPG, etc.
- Red dot laser: laser location indication



WHY CHOOSE METAQUIP?

Help with honest advice and technical knowledge we like choosing the right machine. If necessary, we test your product, or come and see you.

THE USE

We will of course explain how to use the machine, but we also give special training. Ask about the possibilities.

LASER SAFETY

Your safety is important. Our laser machines are safe under all circumstances. When opening the machine, certified safety switches ensure that the machine is switched off immediately. This way, your eyes can never be exposed to harmful laser light. Our safety class 1 certification is the highest classification.

SUPPORT

Of course you can always contact us with questions about your machine. We will always help you get back on track quickly. As a customer, you can access manuals, laser software and videos at www.metaquip.nl You can also exchange experiences with other users.

OTHER THINGS?

The people at MetaQuip have extensive technical knowledge. They can also advise or support you in finding new applications, specific solutions or production automation.

WARRANTY & CERTIFICATION

1 year on the machine, 6 months on the laser tube.
CE certified, laser safety class 1



laser safety class 1

METAQUIP

EXPERTS IN LASERMACHINES

www.metaquip.nl
+31 40 8080 193
info@metaquip.nl

METAQUIP BV
Rondven 41
6026 PX Maarheeze