



CABINET FIBERLASER MACHINE

High resolution laser engraving and marking of metals

MetaQuip's fiber laser engraving machines are suitable for laser engraving and marking almost all metals such as stainless steel and aluminium. Place a serial number, logo or barcode on machine parts or type labels quickly and with high resolution. A permanent marking is therefore perfect for tracking and tracing. The cabinet model is a closed system of laser class 3R. This machine is intrinsically safe without further protection.

LASER ENGRAVING

Laser engraving and marking of metals, such as stainless steel and aluminum, mirrors and some plastics

SOFTWARE

EzCad user-friendly software

WORK AREA

100x100mm and extra lens for 200x200mm

POWER

20W, 30W or 50W

FOCUSHEIGHT

Manual setting of the focus height

SAFETY

Laserklasse 3R. No additional safety measures required.

CERTIFICATION

CE certified meets all machine directives



METAQUIP

EXPERTS IN LASERMACHINES

High quality engraving of steel and alu!

MetaQuip fiber laser engraving machines have a long lifetime, high reliability and engrave with high speed and precision. A closed cabinet model gives you a practical and always safe solution. An ideal solution for safe serial production.

CONTENT

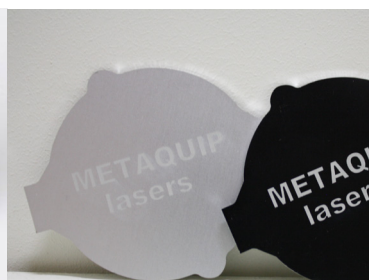
- Cabinet model fiber laser machine (max. z height 600mm) with laser software (Win XP/7/8/10)
- Industrial XY table, lens for work surface of 100x100mm and 200x200mm
- Industrial air filter (ISO 15012-4:2016)
- Product & software manual (NL & EN)

OPTIONS

- Rotation module
- Lens: for work surface up to 300x300mm
- Motorized focus distance adjustment (Z-height)
- Sliding door (z height 500mm) or revolving door (standard, z height 600mm)
- MOPA laser source: for engraving in black or colour

TECHNICAL SPECIFICATIONS

- Working area: 100x100mm or 200x200mm
- Laser type: pulsed, high-energy Raycus laser
- Laser wavelength: 1064 nm
- Repeat frequency: 20-100 kHz
- Laser power: 20W, 30W, 50W
- Minimum spot diameter: 0.01 mm
- Minimum line width: 0.01 mm
- Linear marking speed: 0-12000 mm/s
- Character engraving speed: > 800 characters/sec
- Repeatability +/- 0.001 mm
- Marker depth: 0.01 - 1 mm
- Cooling: air cooling
- Supply voltage: 230 Vac +/- 10%, 50-60 Hz
- Machine Power Output: <500 W
- Housing: closed cabinet model (max. z height 600mm), with integrated control, laser source, computer and monitor
- Dimensions [W x D x H]: 60 x 75 x 180cm
- Temperature: 13-28°C (work), -40-70°C (storage)
- Fonts: TrueType, SHX, JSF (Single line), DMF (Dot Matrix), 1D / 2D barcode
- Variable text: yes for automatic recording
- Link: read data via MS Excel, serial port or network
- Drawing of simple figures and curves
- Image formats: bmp, jpg, gif, tga, png, tif ...
- Vector formats: ai, dxf, dst, plt...



WHY CHOOSE METAQUIP?

With honest advice and technical knowledge, we are happy to help you choose the right machine. We test if requested your materials or application.

THE USE

We will of course explain how to use the machine, but we also give special training. Ask about the possibilities and delivery times. .

LASER SAFETY

Your safety is important. Closed fiber laser machines are laser class 3R machines. No additional laser safety measures are required when working with this laser machine. Closed fiber lasers are safe under all circumstances.

SUPPORT

Of course you can always contact us with questions about your machine. We will always help you get back on track quickly. As a customer, you can access manuals, laser software and videos at www.metaquip.nl You can also exchange experiences with other users.

OTHER THINGS?

The people at MetaQuip have extensive technical knowledge. They can also advise or support you in finding new applications, specific solutions or production automation.

WARRANTY & CERTIFICATION

2 year warranty on the machine, 50,000 hours on the laser source (expected lifetime 50,000 to 100,000 hours, depending on the conditions under which the machine is used). CE certified complies with the machine directives, laser safety class 3R.



laser safety class 3R

METAQUIP

EXPERTS IN LASERMACHINES

www.metaquip.nl
+31 40 8080 193
info@metaquip.nl

METAQUIP BV
Rondven 41
6026 PX Maarheeze