

# COMPACT FIBERLASER MACHINE

## High resolution laser engraving and marking of metals

MetaQuip's fiber laser engraving machines are suitable for laser engraving and marking almost all metals such as stainless steel and aluminium. Place a serial number, logo or barcode on machine parts or type labels quickly and with high resolution. A permanent marking is therefore perfect for tracking and tracing. The compact model is the open entry model where you use a separate computer with the laser software.

### LASER ENGRAVING

Laser engraving and marking of metals, such as stainless steel and aluminum, mirrors and some plastics

### SOFTWARE

EzCad user-friendly software

### WORK AREA

100x100mm and extra lens for 200x200mm

### POWER

20W, 30W or 50W

### FOCUSHEIGHT

Manual setting of the focus height

### SAFETY

Laserklasse 4. Additional safety measures required.

### CERTIFICATION

CE certified meets all machine directives



# METAQUIP

EXPERTS IN LASERMACHINES

# High quality engraving of steel and alu!

MetaQuip fiber laser engraving machines have a long lifetime, high reliability and engrave with high speed and precision. An open table model gives you maximum handling speed and object placement freedom. An ideal solution for series production.

## CONTENT

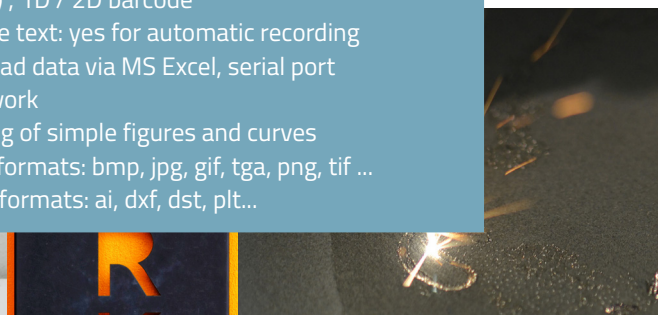
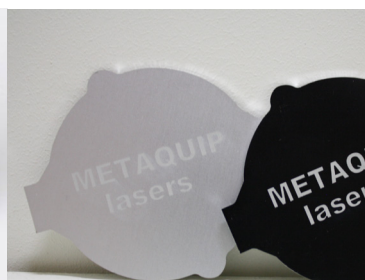
- Compact model fiber laser machine (max. z height 800mm)
- Laser software (Win XP/7/8/10)
- Industrial XY table, lens for work surface of 100x100mm and 200x200mm
- Industrial air filter (ISO 15012-4:2016)
- Certified laser safety glasses
- Product & software manual (NL & EN)

## OPTIONS

- Rotation module
- Lens: for work surface up to 300x300mm
- Motorized focus distance adjustment (Z-height)
- Additional laser safety glasses
- Laptop with laser software
- MOPA laser source: for engraving in black or colour

## TECHNICAL SPECIFICATIONS

- Working area: 100x100mm or 200x200mm
- Laser type: pulsed, high-energy Raycus laser
- Laser wavelength: 1064 nm
- Repeat frequency: 20-100 kHz
- Laser power: 20W, 30W, 50W
- Minimum spot diameter: 0.01 mm
- Minimum line width: 0.01 mm
- Linear marking speed: 0-12000 mm/s
- Character engraving speed: > 800 characters/sec
- Repeatability +/- 0.001 mm
- Marker depth: 0.01 - 1 mm
- Cooling: air cooling
- Supply voltage: 230 Vac +/- 10%, 50-60 Hz
- Machine Power Output: <500 W
- Housing: open compact model (max. z height 800mm), with integrated control & laser source
- Temperature: 13-28°C (work), -40-70°C (storage)
- Fonts: TrueType, SHX, JSF (Single line), DMF (Dot Matrix), 1D / 2D barcode
- Variable text: yes for automatic recording
- Link: read data via MS Excel, serial port or network
- Drawing of simple figures and curves
- Image formats: bmp, jpg, gif, tga, png, tif ...
- Vector formats: ai, dxf, dst, plt...



## WHY CHOOSE METAQUIP?

With honest advice and technical knowledge, we are happy to help you choose the right machine. We test if needed your materials or application.

## THE USE

We will of course explain how to use the machine, but we also give special training. Ask about the possibilities and delivery times. .

## LASER SAFETY

Your safety is important. Open fiber laser machines are laser class 4 machines. When working with this laser machine, additional laser safety measures are required to guarantee your safety. This includes certified laser safety glasses. MetaQuip can advise you what else is needed to work safely.

## SUPPORT

Of course you can always contact us with questions about your machine. We will always help you get back on track quickly. As a customer, you can access manuals, laser software and videos at [www.metaquip.nl](http://www.metaquip.nl) You can also exchange experiences with other users.

## OTHER THINGS?

The people at MetaQuip have extensive technical knowledge. They can also advise or support you in finding new applications, specific solutions or production automation.

## WARRANTY & CERTIFICATION

2 year warranty on the machine, 50,000 hours on the laser source (expected lifetime 50,000 to 100,000 hours, depending on the conditions under which the machine is used). CE certified complies with the machine directives, laser safety class 4.



laser safety class 4

# METAQUIP

EXPERTS IN LASERMACHINES

[www.metaquip.nl](http://www.metaquip.nl)  
+31 40 8080 193  
[info@metaquip.nl](mailto:info@metaquip.nl)

METAQUIP BV  
Rondven 41  
6026 PX Maarheeze