



UV LASER LASER ENGRAVING MACHINE

Industrial UV lasers for engraving and marking of PCBs material, plastic or glass

MetaQuip's UV laser machine is suitable for engraving and marking a large number of materials such as PCBs, glass and a large number of plastics. Super fast placing of serial numbers, texts, barcodes, logos or images.

LASER ENGRAVING	Laser engraving and marking of PCBs, glass and plastics
SOFTWARE	Integrated computer with EzCAD laser software
WORK SURFACE	100x100 mm and extra 200x200 mm lens
POWER	3W or 5W UV
FOCUS HEIGHT	Quick and easy manual focus height adjustment
SAFETY	Laserclass 3R (closed), 4 (open model)
CERTIFICATION	CE certified - conforms to all applicable machinery directives



METAQUIP

EXPERTS IN LASERMACHINES

Laser engraving of PCB and plastics!

MetaQuip UV lasers are available in an open and closed version and due to the special 355nm wavelength are perfectly suited for fast and indelible laser engraving of PCB, glass and plastic.

CONTENT

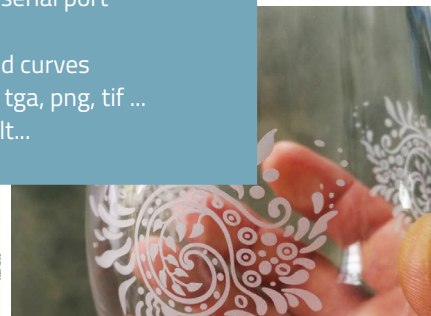
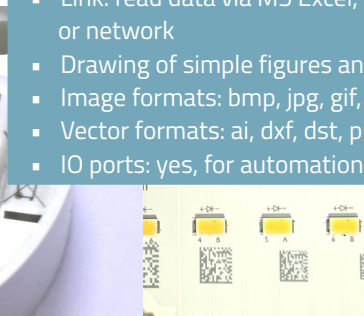
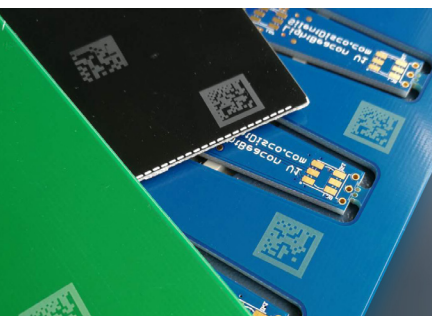
- UV Laser machine: open or closed (z to 600mm)
- Industrial XY table, manual focus setting, lens for work surface of 100x100mm and 200x200mm, water cooler
- Industrial air filter (complies with ISO 15012-4:2016)
- Certified laser safety glasses (only with open model)
- Product & software manual (NL & EN)

OPTIONS

- Rotation module
- Lens for 300x300mm work surface
- 3D laser head: real-time focus height adjustment for curved objects.
- Automation via free IO ports
- Motorized focus height adjustment (z axis)
- Sliding door (z to 500mm) instead of a revolving door (z to 600mm)

TECHNICAL SPECIFICATIONS

- Working area: 100x100mm and 200x200mm
- Laser type: pulsed, high-energy laser (Nd:YVO4)
- Laser wavelength: 355 nm
- Laser power: 3W, 5W
- Minimum spot diameter: 0.01 mm
- Minimum line width: 0.01 mm
- Linear marking speed: 0-12000 mm/s
- Character engraving speed: > 800 characters/sec
- Repeatability +/- 0.001 mm
- Marker depth: 0.01 - 1 mm
- Supply voltage: 230 Vac +/- 10%, 50-60 Hz
- Machine Power Output: <750 W
- Dimensions [W x D x H]: 60 x 75 x 180cm (closed)
- Housing: open table or closed, with integrated control, laser source, PC and monitor
- Temperature: 13-28°C (work), -40-70°C (storage)
- Fonts: TrueType, SHX, JSF (Single line), DMF (Dot Matrix), 1D / 2D barcode
- Variable text: yes for automatic recording
- Link: read data via MS Excel, serial port or network
- Drawing of simple figures and curves
- Image formats: bmp, jpg, gif, tga, png, tif ...
- Vector formats: ai, dxf, dst, plt...
- IO ports: yes, for automation



WHY CHOOSE METAQUIP?

Help with honest advice and technical knowledge we like choosing the right machine. If necessary, we test your product, or come and see you.

THE USE

We will of course explain how to use the machine, but we also give special training. Ask about the possibilities.

LASER SAFETY

Your safety is important. UV lasers are available in closed and open versions. Closed: laser safety class 3R, intrinsically safe. Open: class 4, while working with this machine additional laser safety measures are required to guarantee your safety. This includes certified laser safety glasses. MetaQuip can advise you what else is needed to work safely.

SUPPORT

Of course you can always contact us with questions about your machine. We will always help you get back on track quickly. As a customer, you can access manuals, laser software and videos at www.metaquip.nl You can also exchange experiences with other users.

OTHER THINGS?

The people at MetaQuip have extensive technical knowledge. They can also advise or support you in finding new applications, specific solutions or production automation.

WARRANTY & CERTIFICATION

2 year warranty on the machine, 20,000 hours on the laser source (expected life 20,000 to 40,000 hours, depending on the conditions under which the machine is used). CE certified, laser class 4 (open) or 3R (closed).



laser safety class 3R or 4

METAQUIP

EXPERTS IN LASERMACHINES

www.metaquip.nl
+31 40 8080 193
info@metaquip.nl

METAQUIP BV
Rondven 41
6026 PX Maarheeze